

# OndaVia, Inc.

Definitive results. Decisive actions.



**Mark Peterman**  
**CEO**

On-site, laboratory-grade, rapid-response testing

4  
OR

days

\$MM Equipment  
\$\$\$ Scientists

5

minutes

\$K Equipment  
\$ Technicians

**MEASURED BY  
THE BOOTS ON  
THE GROUND**



# Raman spectroscopy

1920s



1990s



2000s

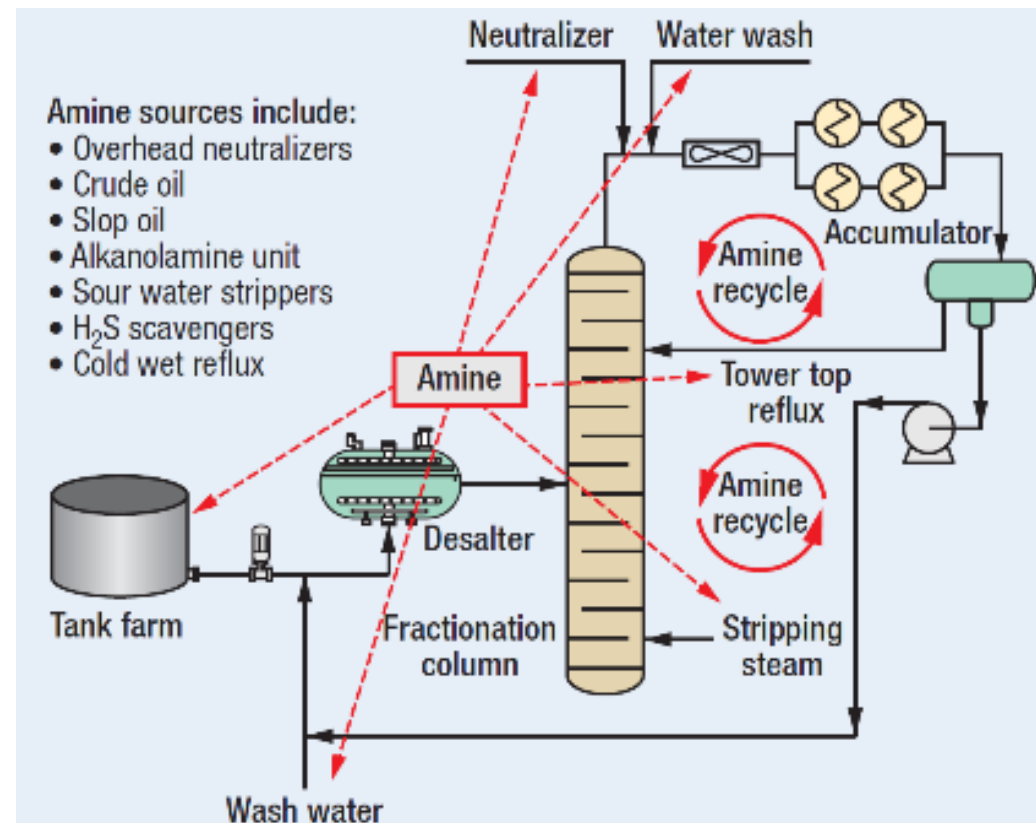




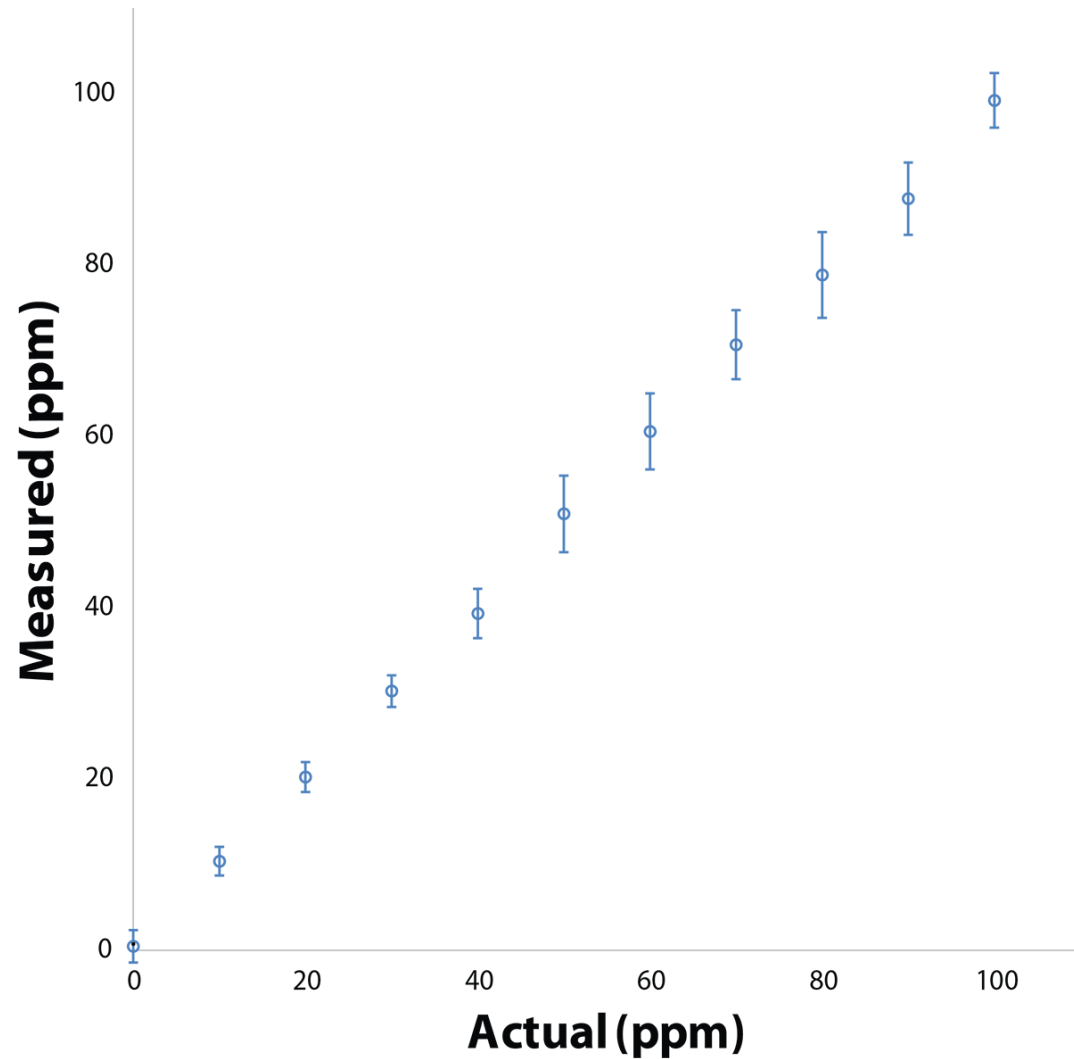
# Amines

Tramp amines form heat stable salts that limit refinery operating temperatures

**Cost: \$10K-\$50K per day**

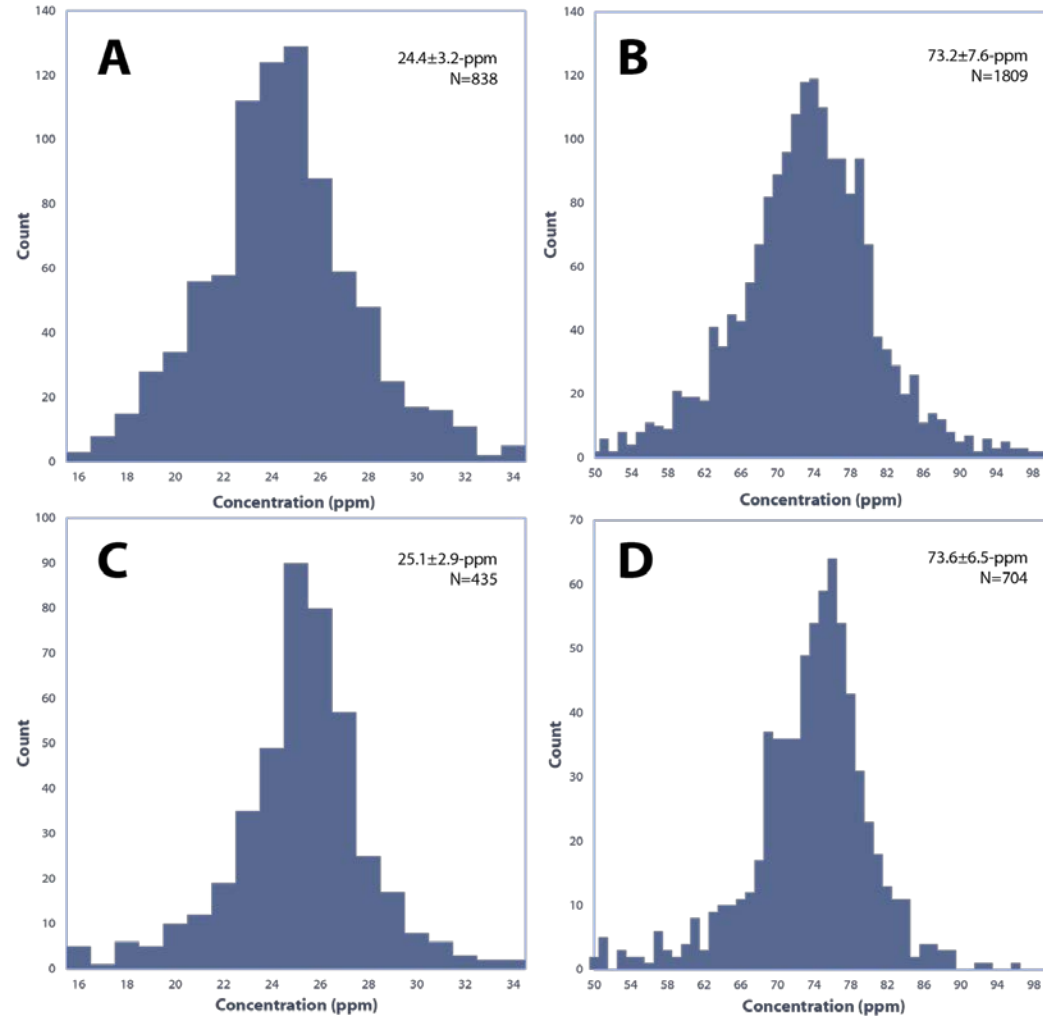


# Ethanolamine



- Self-calibrating
- Sensitive
- Accurate

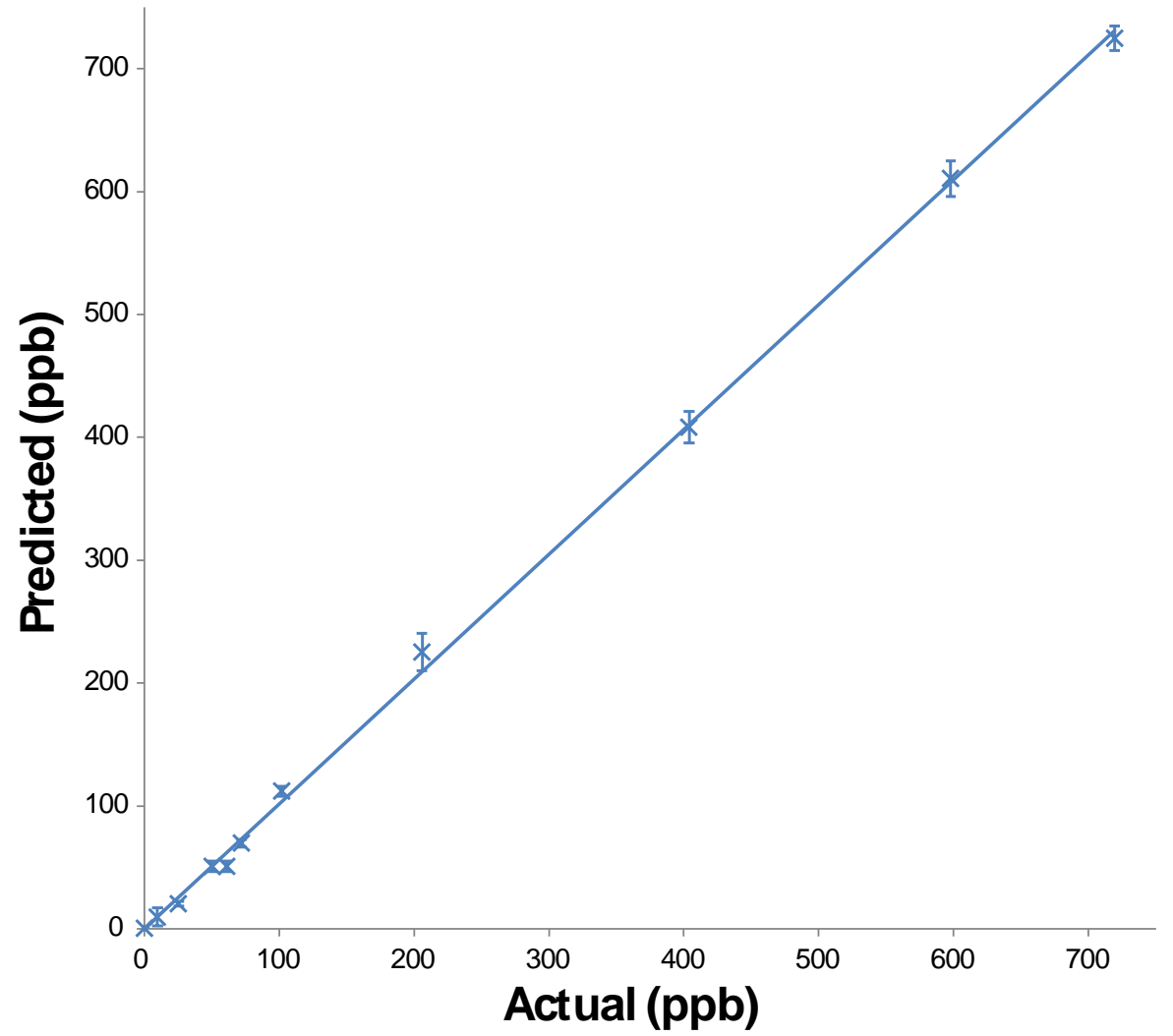
# Ethanolamine



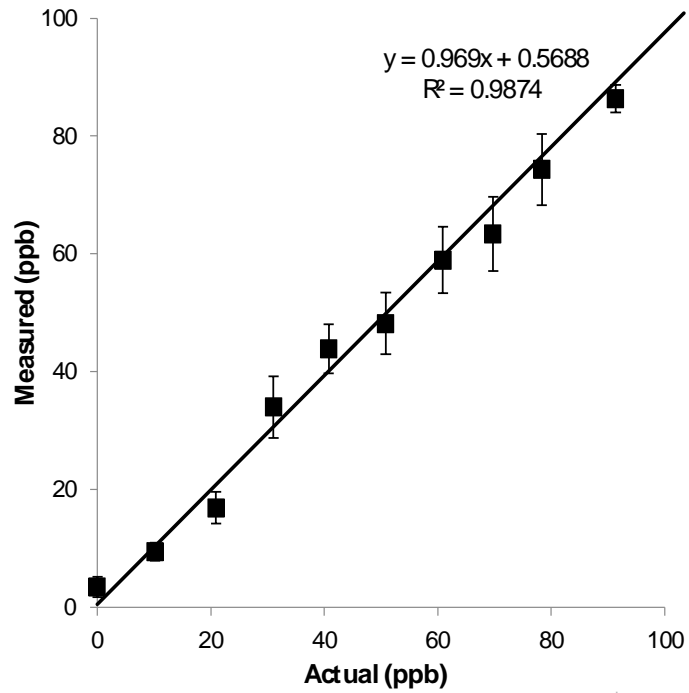
One calibration curve,  
generated in 2014

Data collected from 25  
spectrometers over nearly  
four years

# Selenium

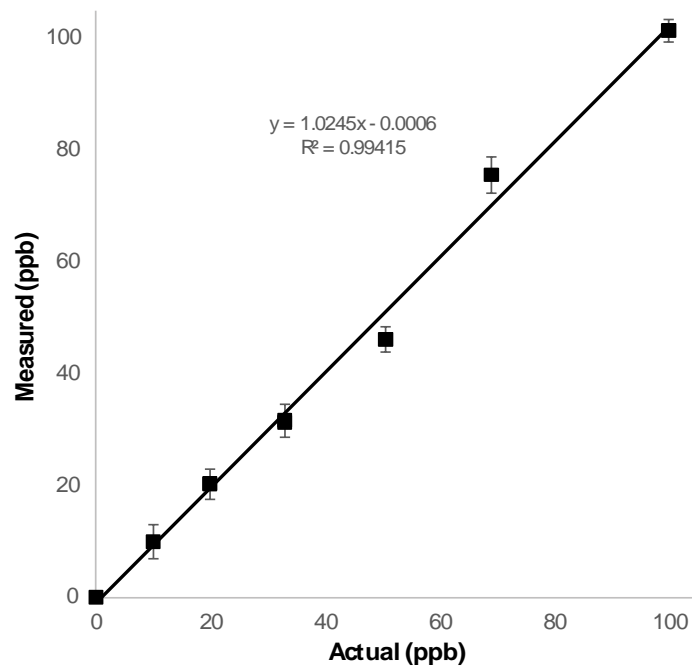






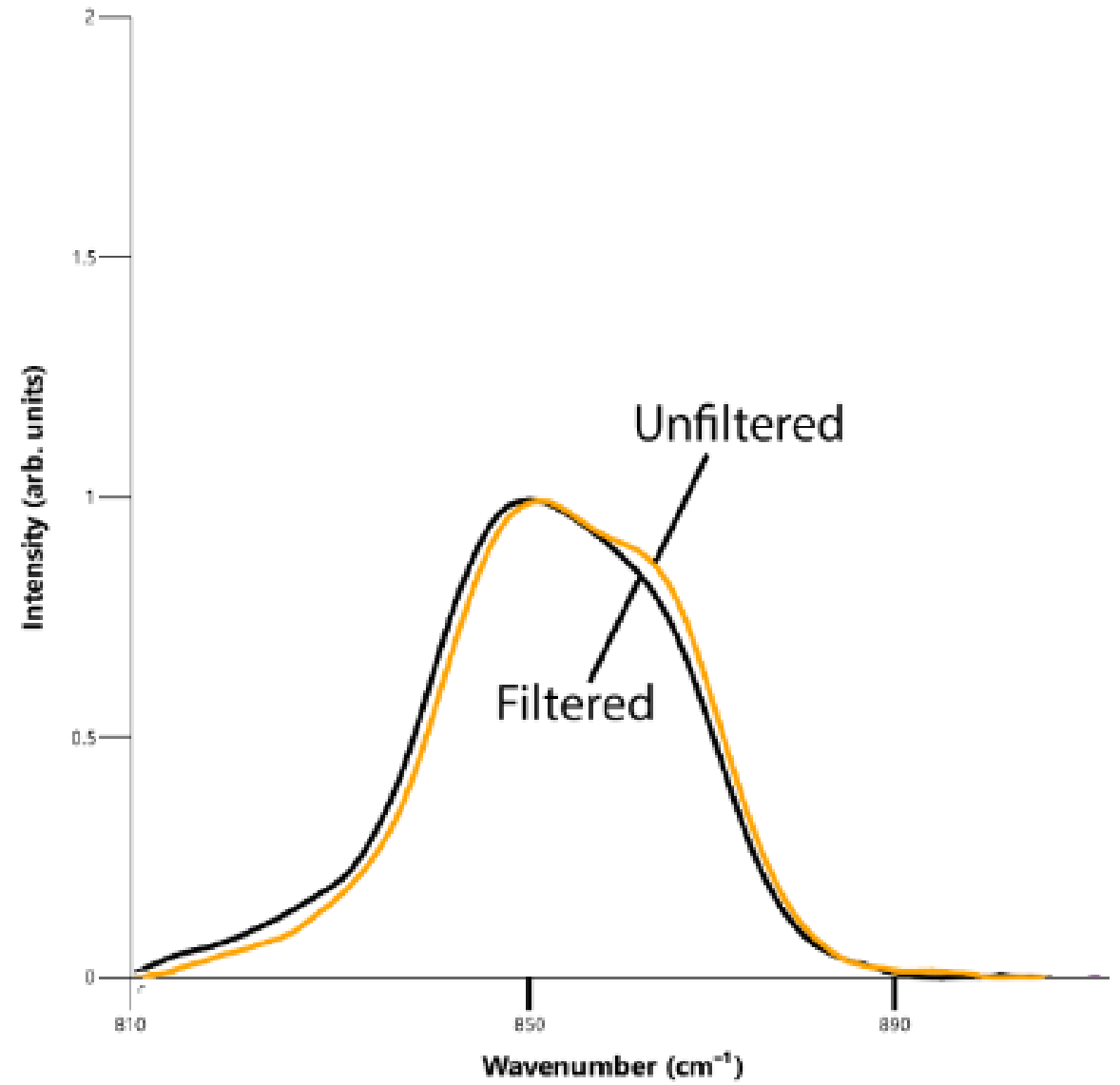
**Arsenite [As(III)]**

**Arsenate [As(V)]**



**Arsenic (with  
speciation)**

# Lead







# WHAT CAN WE MEASURE FOR YOU?

Mark Peterman  
[peterman@ondavia.com](mailto:peterman@ondavia.com)